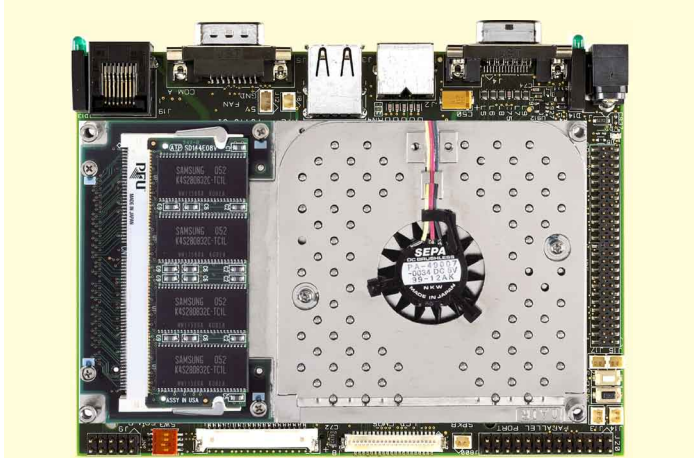
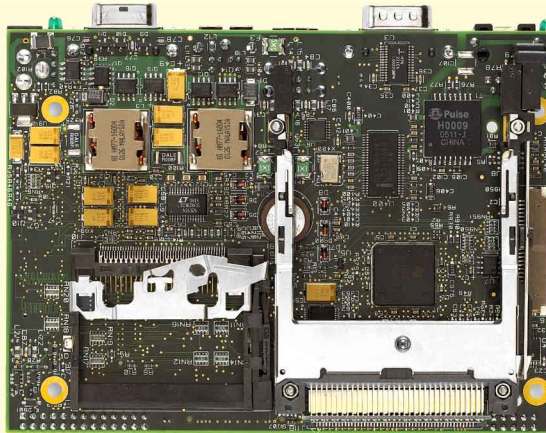


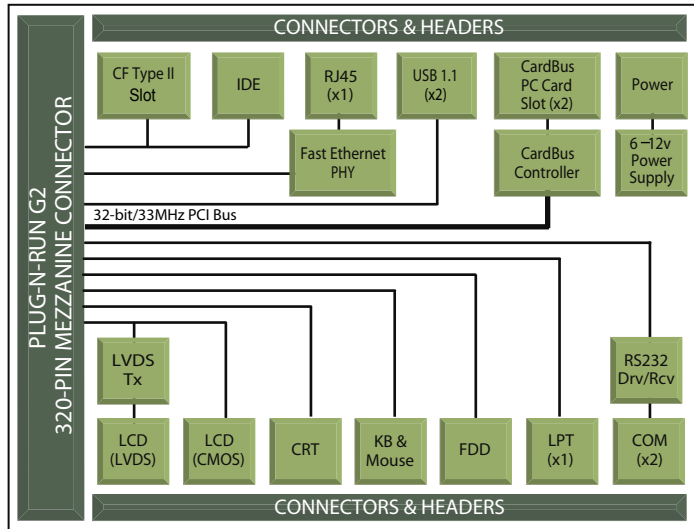
Plug-N-Run™ G2 Carrier Board



NetCARD G2 shown with 933MHz Plug-N-Run G2 Module



Opposite View



Block Diagram

Applications:

- Industrial automation
- Medical
- Transportation
- Test & measurement
- Security
- Retail

Description:

PFU Systems' NetCARD G2 is an ultra-compact, off-the-shelf carrier board that uses PFU Systems' Plug-N-Run G2 System-On-Modules for x86 host functionality. The NetCARD G2 carrier board and Plug-N-Run G2 module combined, deliver a small footprint and low-power embedded system with scalable performance and industry standard I/O interfaces.

The NetCARD G2 carrier board provides flexible expansion via two Type II PC CardBus slots. Industry standard I/O interfaces include USB 1.1 for full-speed device connectivity, serial ports for control and low speed data transfer, ATA100 IDE interface, floppy disk drive interface and a parallel port. An IDE CompactFlash® Type II socket accepts removable solid-state storage devices for software upgrades and system recovery. An Ethernet port supports PXE (Pre-Boot-Execution Environment) for diskless booting over a LAN. LVDS LCD and parallel CMOS LCD panels may be connected to the NetCARD G2 in addition to a VGA interface for enhanced 3D graphics.

The NetCARD G2 Starter Kit with a complete set of cables, and the reference design kit with schematics and bill of materials are available separately. PFU Systems ProDeS™ professional design services provides quick-turn customization and production of carrier boards. Please contact your PFU Systems sales representative for further details.

SPECIFICATIONS SUMMARY

FEATURE	SPECIFICATION
MODULE	
Compatibility	Plug-N-Run G2 modules
Interface	320-pin mezzanine connector
I/O CONTROLLER	
CardBus Controller	Texas Instruments PC1520
Ethernet PHY	Intel® 82562ET, 10/100Base-T with PXE
I/O CONNECTORS & HEADERS	
CardBus	2x Type II slots or 1x Type III slot
USB 1.1	2x USB type A connectors
Ethernet	1x RJ45 connector
IDE	1x 50-pin header
CompactFlash (True IDE)	1x Type II slot
Floppy Disk Drive	1x 26-pin FPC connector
Serial	1x RS232 9-pin D-Sub connector, 1x RS232 10-pin header
Parallel	1x 26-pin header
Keyboard/Mouse	1x PS/2 6-pin Mini-DIN connector
CRT	1x 15-pin D-Sub connector
LCD	1x 41-pin header (Parallel CMOS), 1x 20-pin header (LVDS)
LCD Inverter Power	2x 2-pin headers (+5VDC & GND; +12VDC & GND)
PC Speaker/Buzzer	1x 2-pin header
CMOS Backup Battery	1x VL1220, populated
Power Supply	1x DC jack, 6–12VDC
Fan	1x 3-pin header
OPERATING CONDITIONS	
Ambient Temperature (Ta)	0 – 50°C
STORAGE CONDITIONS	
Storage Temperature	-20 – 65°C
Humidity	0 – 90% RH, non condensing
PHYSICAL	
Dimensions	137.16mm x101.6mm x 33.02mm (5.4" x 4.0" x 1.3")
Weight	≤ 226.8g (8 oz)

ORDERING INFO

ITEM	PART NUMBER
Carrier Board	
NetCARD G2 Carrier Board	PS2PRNETG2
Accessories	
Starter Kit	PS2PRNETG2KIT
Reference Design (Schematics, BOM, Gerbers)	PS2PRNETG2REF
Please contact PFU Systems for a complete list of available accessories for the NetCARD G2.	
Plug-N-Run G2 Modules	
400MHz Plug-N-Run G2	PS2PR400
650MHz Plug-N-Run G2	PS2PR650
933MHz Plug-N-Run G2	PS2PR933

ProDeS CUSTOMIZATION OPTIONS

PFU Systems ProDeS professional design services provides quick-turn customization, cost reduction and production of custom carrier boards. Please contact PFU Systems for further details.

SALES OFFICES

Headquarters & Int'l Sales Office

PFU Systems, Inc.
1331 Lawrence Expwy, Ste. 200
Santa Clara, CA 95051-3501
Phone: +1.408.236.3000
Fax: +1.408.236.3099

Midwest Sales Office

PFU Systems, Inc.
2600 Fernbrook Lane, Ste. 130
Plymouth, MN 55447-4752
Phone: +1.763.551.8261
Fax: +1.763.551.8265

For more information and a list of PFU Systems sales representatives near you, please call our sales offices or visit us at <http://www.PFUsystems.com>

PFU Systems, Inc. does not warrant its products for use in applications which may involve dangers to human health or safety, including but not limited to medical life support, surgery, aircraft flight control, air traffic control, mass transportation control, missile launch and or guidance control, environmental control, or the planning construction, maintenance, and operation of a nuclear facility.

PFU Systems, Inc. reserves the right to make changes to its products and product specifications at any time without notice. PFU Systems, Cell Computing, HardBrick, Blazor, Plug-N-Run, RazorBlade®, Fail-Safe-Boot, and Signature are trademarks of PFU Systems, Inc. All other trademarks and registered trademarks are property of their respective holders. ©2000-2005 PFU Systems, Inc. All rights reserved.

